



Fire resistant steel door T 90-2-FSA „Teckentrup 62“

optionally with glazing

Text example:

T 90-2-FSA fire-proof steel door tested as per EN 1634-1 (DIN 4102). Double-leaf door element, active door leaf DIN right. Door leaf 62 mm thin, rebated on 3 sides. Flush mounted door leaf without hinge stamping. Corner frame 1.5 mm thick with 3-sided seal and bottom sill. Leaf and frame galvanized and prime coated in Grey white, similar to RAL 9002. Active door leaf with mortice lock, with latch lever, prepared for profile cylinder as per DIN 18250. FS-round handle set, black (plastic), handle pivoted on bearing, with tumbler insert (Bb) and 1 Bb-key. Inactive door leaf with espagnolette bolt lock and standard top locking. 2 KO-hinges with ball bearings per leaf, 1 top door closer as per DIN EN 1154, 1 security bolt, 1 door selector. "Teckentrup 62" or equivalent.
Compile and tender according to requirements. Please refer to technical data below for respective details. Updated 1. March 2018

Technical data

Also available in **STAINLESS STEEL**

Building authority approval	Z-6.20-1965 tested as per EN 1634-1 (DIN 4102) for installation in internal walls.	Glazing	Fire-resistant glass F 90, with aluminium glass-holding strips. Max. pane size 1000 x 2263 mm. Round glazing Ø 300, 400 and 500 mm with steel glass-holding strips, valvanized and prime coated, similar to RAL 9002 (Grey white). Special equipment: - round glass pane holding strip in stainless steel - rectangular aluminium holding strip in stainless steel look
Installation in	<ul style="list-style-type: none"> ▪ Masonry min. 175 mm ▪ Concrete min. 140 mm ▪ Leight weight construction stud walls * min. 100 mm ▪ Autoclaved aerated concrete <ul style="list-style-type: none"> - as per DIN 4165 min. 200 mm - reinforced type min. 175 mm ▪ Cladded steel beams F 90 <p>* F 90 as per DIN 4102 part 4 or in accordance with the general building authority test certificate. For permissible walls refer to the installation details tab.</p>	Special equipment	<ul style="list-style-type: none"> ▪ Handle sets / Lever/Knob sets: <ul style="list-style-type: none"> - plastic - light metal - stainless steel ▪ - with short plate or rose escutcheon (various makes) ▪ prepared for rose escutcheon ▪ locks: <ul style="list-style-type: none"> profile cylinder 40,5 + 40,5 mm - panic locks block lock (must be provided) ▪ top door closer DIN EN 1154 ▪ - head assembly ▪ - with slide rail - with locking device ▪ - with smoke detector - ITS 96 (hidden) ▪ electric door opener ▪ Integrated lock inspector (bolt contact) ▪ Integrated opening indicator (Reed contact) ▪ Revolving door drives ▪ Hold-open devices ▪ 3D-hinges (with top door closer)
Approved dimensions	Modular dimension: W 1375 – 3000 mm H 1750 – 3000 mm With top light/ top casing up to H 4000 mm		
Handing	DIN right or DIN left		
Door leaf	Double-skinned , trap door 4-sided Door rebated on three sides thin rebated Door leaf thickness 62 mm Sheet thickness 1,0 mm or 1,5 mm Security bolt min. 3		
Frame	<ul style="list-style-type: none"> ▪ Corner frame 1,5/2,0 mm thick, with 3-sided seal, without floor recess. Frame fastening by exposed masonry mounting. Special equipment: <ul style="list-style-type: none"> ▪ block-, counter- or closed frame ▪ with floor recess 		
Floor seals	<ul style="list-style-type: none"> ▪ Retractable floor seal ▪ sliding threshold seal ▪ Buffer strip and seal ▪ Floor seal retrofittable 		
Surface	Door leaf/frame galvanized and prime coated, similar to RAL 9002 (Grey white).		
Hinges and closing devices	<ul style="list-style-type: none"> ▪ 2 KO-hinges with ball bearings per door leaf and top door closer ▪ 1 door selector ▪ compensation rings for height adjustment 	Ordering dimensions / (modular dimensions)	Clear passage size (corner frame)
Fittings	Active door leaf: <ul style="list-style-type: none"> ▪ Mortice lock with latch lever prepared for profile cylinder as per DIN 18250. FS round handle set black (plastic), handle pivoted on bearing, with tumbler insert (Bb) and 1 Bb key Inactive door leaf: <ul style="list-style-type: none"> ▪ Inactive leaf with espagnolette bolt and standard top locking. 	Width x height	width x height
		Standard size	
		1500 x 2000	1416 x 1958
		2125	2083
		1750 x 2000	1666 x 1958
		2125	2083
		2000 x 2000	1916 x 1958
		2125	2083
		2500	2458
		2125 x 2125	2041 x 2083
		2250 x 2250	2166 x 2208
		2500 x 2500	2416 x 2458

(Special sizes: from 1375 x 1750 to 3000 x 3000)

Further Qualifications
(Special equipment):



Smoke proof in accordance with EN 1634-3



Sound insulated in acc. with DIN EN 20140/717 Part 1
RW 43dB with retractavble floor seal
RW 43dB with bottom buffer and seal

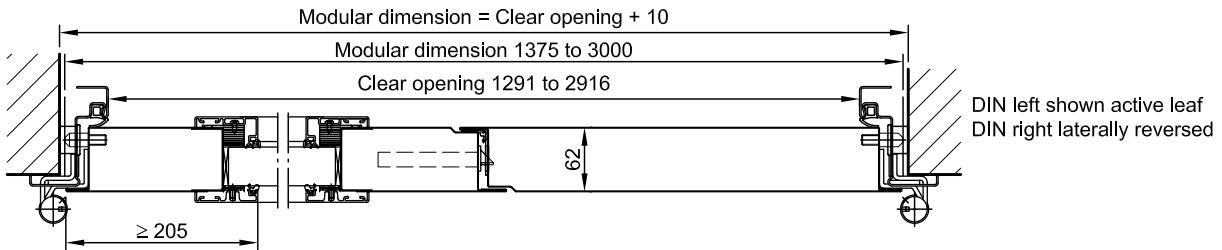
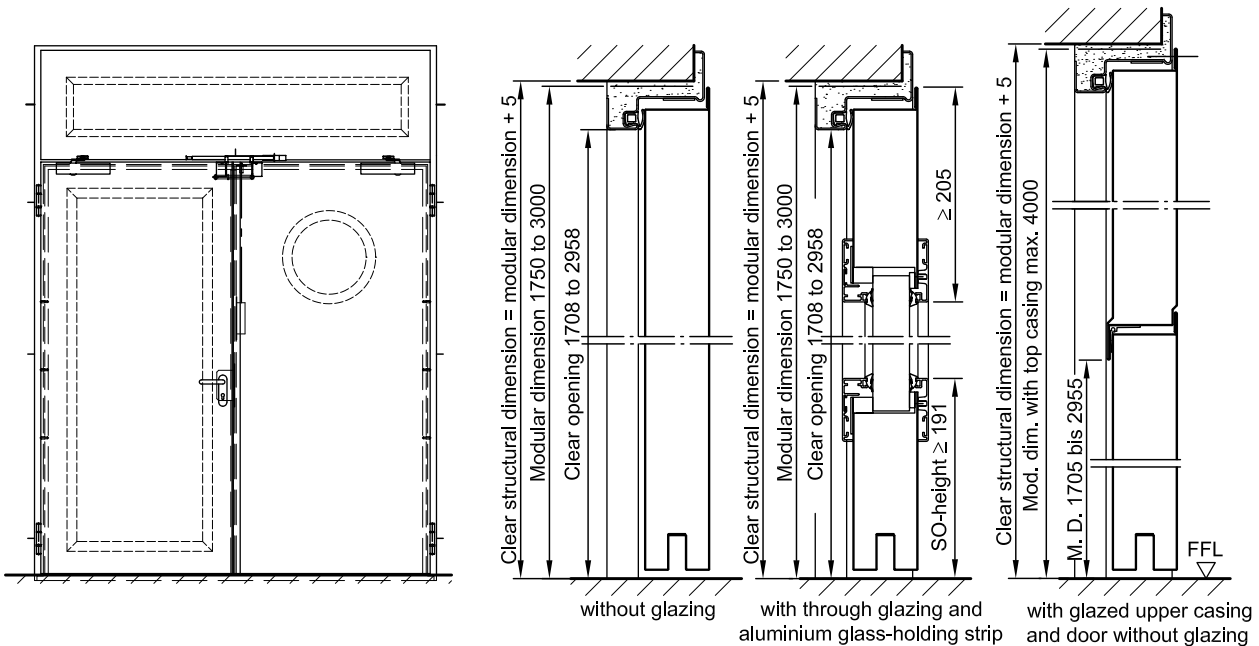


Burglar-resistant in accordance with DIN EN 1627 - **RC 2, RC 3, RC 4**



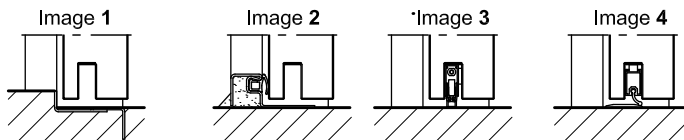
Fire resistant steel door T 90-2-FSA „Teckentrup 62“

optionally with glazing



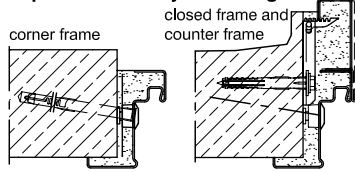
Floor connections:

- Image 1: With bottom buffer
- Image 2: With bottom buffer/seal
- Image 3: With bottom seal (smoke-proof door with top door closer)
- Image 4: sliding threshold seal

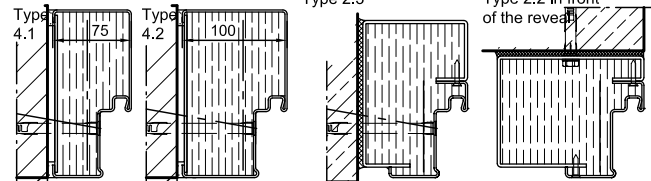


Installation in masonry/ concrete walls
concrete walls ≥ 140 mm
masonry walls ≥ 175 mm

exposed masonry mounting

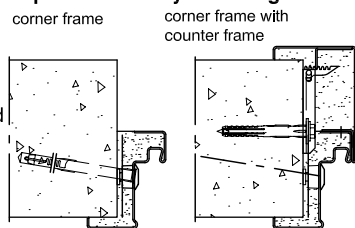


Flush installation

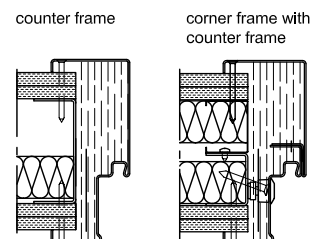


Installation in autoclaved aerated concrete walls
(doors with top door closer)
Made of autoclaved aerated concrete blocks or made of reinforced autoclaved aerated concrete slabs.
Wall thickness min. 175 mm.

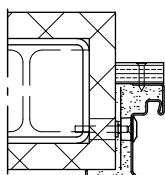
exposed masonry mounting



Installation in lightweight construction stud walls (doors with top door closer) Installation walls $\geq F90$ wall thickness 100 mm. For permissible walls refer to the installation details tab



Installation on concealed steel supports
F90



Please find a detailed installation overview in the planning-, installation- and maintenance manual for 1-leaf and 2-leaf doors.