



Fire resistant steel door T 90-2-FSA „Teckentrup DF“

optionally with glazing

Text example:

T 90-2-FSA fire-proof steel door tested in accordance with DIN 4102. Double-leaf door element. Active door leaf DIN right. Door leaf 62 mm, 3-sided seal with thick rebate. Corner frame 2.0 mm thick, with 3-sided seal. Door leaf and frame galvanized and prime coated in grey white, similar to RAL 9002. Active door leaf with mortice lock, with latch lever, prepared for profile cylinder in acc. with DIN 18250. FS round handle-set black (plastic). Handle pivoted on bearing, with tumbler insert (Bb) and 1 Bb-key. Inactive door leaf with central rebate and rebate lever bolt. 2 KO-hinges with ball bearings. 2 top door closer, 1 door selector. 2 security bolts per door leaf.
„Teckentrup DF“ or equivalent.

Compile and tender according to requirements. Please refer to technical data below for respective details. Updated 1. March 2018

Technical data

Building authority approval	Z-6.20-1965 tested as per EN 1634-1 (DIN 4102) for installation in internal walls.
Installation in	<ul style="list-style-type: none"> ▪ Masonry min. 175 mm ▪ Concrete min. 140 mm ▪ Leight weight construction stud walls * min. 100 mm ▪ Autoclaved aerated concrete <ul style="list-style-type: none"> - as per DIN 4165 min. 200 mm - reinforced type min. 200 mm ▪ Cladded steel beams F 90 <p>* F 90 as per DIN 4102 part 4 or in accordance with the general building authority test certificate. For permissible walls refer to the installation details tab.</p>
Approved dimensions	Modular dimension: W 1375 - 3000 (3250) mm H 1750 - 3000 (3500) mm () dimensions = door leaf thickness 64 mm
Handling	DIN right oder DIN left
Door leaf	double skinned, Door rebated on three sides thick rebated Door leaf thickness 62/64 mm Sheet thickness: 1.0 mm oder 1.5 mm Security bolt: 3 Reinforcement: flat steel Special equipment: 1.5 mm sheet thickness
Frame	Cornerframe 2.0/(3.0) mm thick with 3-sided seal. With 3 welded-on wall anchor plugs on each side. Special equipment: ▪ block frame, counter- or closed frame. ▪ with floor recess.
Floor seals	<ul style="list-style-type: none"> ▪ Retractable floor seal ▪ sliding threshold seal ▪ Buffer strip and seal ▪ Floor seal retrofittable
Surface	Door leaf/Frame galvanized and prime coated, similar to RAL 9002 (Grey white).
Hinges and closing devices	<ul style="list-style-type: none"> ▪ 2 KO-hinges with ball bearings per door leaf and top door closer ▪ 1 door selector ▪ compensation rings for height adjustment
Fittings	Active door leaf: <ul style="list-style-type: none"> ▪ Mortice lock with latch lever, prepared for profile cylinder in acc. with DIN 18250 ▪ FS-round handle-set black (plastic). Handle pivoted on bearing, with tumbler insert (Bb) and 1 Bb-key Inactive door leaf: <ul style="list-style-type: none"> ▪ with central rebate profile ▪ with rebate lever bolt

Also available in **STAINLAESS STEEL**

Glazing	Fire resistant glass F90 with steel glass-holding stirps, galvanize and prime coated in grey white, similar to RAL 9002. Max. pane size 740 x 2005 mm, round glazing Ø 300; Ø 400; Ø 500 mm. Special equipment: <ul style="list-style-type: none"> ▪ steel glass holding with additional aluminum cover strips. ▪ Round glazing stainless steel glass holding strips.
Special equipment	<ul style="list-style-type: none"> ▪ Handle sets / Lever/Knob sets: <ul style="list-style-type: none"> - plastic - light metal - stainless steel - with short plate or rose escutcheon (various makes) ▪ prepared for rose escutcheon ▪ locks: <ul style="list-style-type: none"> profile cylinder 40.5 + 40.5 mm - panic locks - Block lock (must be provided) ▪ top door closer DIN EN 1154 <ul style="list-style-type: none"> - head assembly - with slide rail - with locking device - with smoke detector - ITS 96 (hidden) ▪ electric door opener ▪ Integrated lock inspector (bolt contact) ▪ integrated opening indicator (reed contact) ▪ Revolving door drives ▪ Hold-open devices

	Ordering dimensions / (modular dimensions) width x height	Clear passage size (corner frame) width x height
Standard sizes:	1500 x 2000	1416 x 1958
	2125	2083
	1750 x 2000	1666 x 1958
	2125	2083
	2000 x 2000	1916 x 1958
	2125	2083
	2500	2458
	2125 x 2125	2041 x 2083
2250 x 2250	2166 x 2208	
2500 x 2500	2416 x 2458	

(Special sizes: from 1375 x 1750 to 3250 x 3500)

Further Qualifications
(Special equipment
62 mm door):



Smoke proof in accordance to
DIN 18095

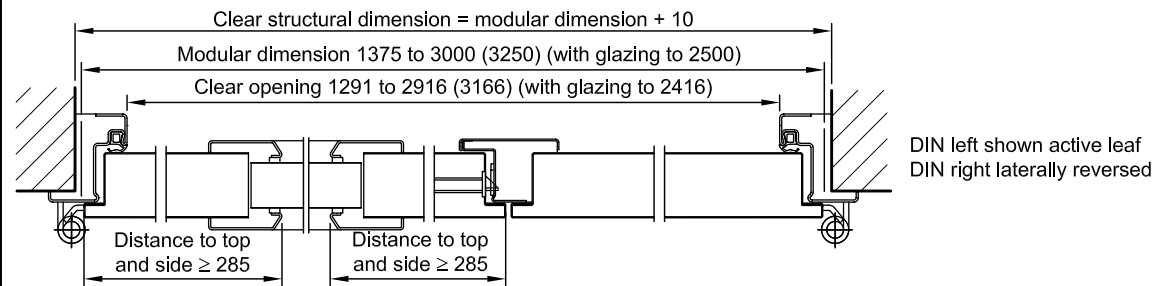
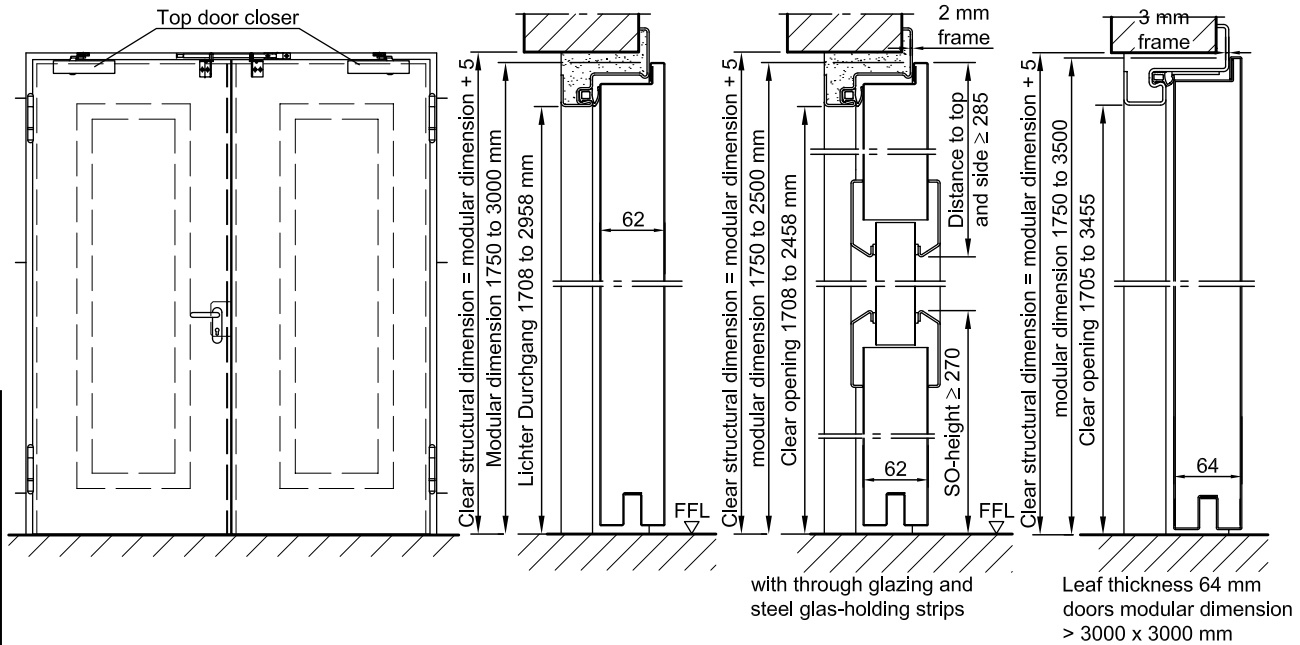


Sound insulated in acc. with DIN EN 20140/717 T1
RW 40dB with bottom buffer and seal
RW 36dB with retractavble floor seal



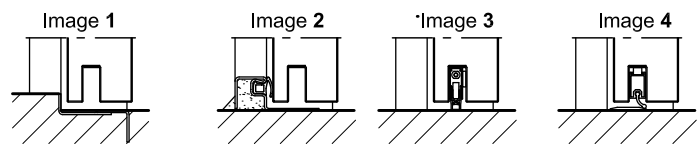
Fire resistant steel door T 90-2-FSA „Teckentrup DF“

optionally with glazing



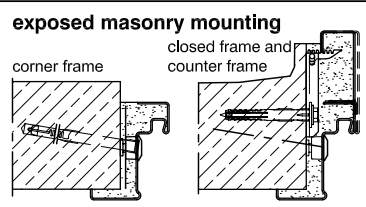
Floor connections:

- Image 1: With bottom buffer
- Image 2: With bottom buffer/seal
- Image 3: With bottom seal (smoke-proof door with top door closer)
- Image 4: sliding threshold seal

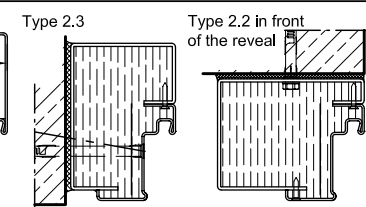
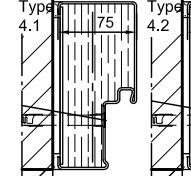


Installation in masonry/ concrete walls

concrete walls ≥ 140 mm
masonry walls ≥ 175 mm
(M. D. > 3000 x 3000 mm masonry walls ≥ 240 mm)

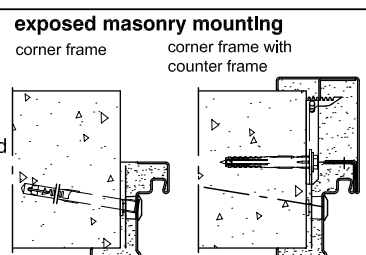


Flush installation



Installation in autoclaved aerated concrete walls

(doors with top door closer)
Made of autoclaved aerated concrete blocks or made of reinforced autoclaved aerated concrete slabs.
Wall thickness min. 200 mm.



Installation in lightweight construction stud walls

(doors with top door closer) Installation walls \geq F90 wall thickness 100 mm. For permissible walls refer to the installation details tab

