



Steel door dw 42-2 „Teckentrup“

optionally with glazing, optionally with upper casing

Text example:

Steel door dw 42-2. Double-leaf door element.

Active door leaf DIN right. Door leaf, 42 mm thick, rebated on 3 sides Corner frame, 2.0 mm thick, with 3-sided seal. Flush mounted door leaf with less protruding hinges. Door leaf/Frame galvanized and powder coated, similar to RAL 9002 (Grey white). Active door leaf with mortice lock with latch lever in accordance with DIN 18250, prepared for profile cylinder. Black plastic handle set. Handle pivoted on bearing, with tumbler insert (Bb) and 1 Bb key. Inactive door leaf with central stop rail and seal, with concealed door edge bolt on the opposite hinge side. 1 security bolt per leaf, 4 KO hinges with ball bearings.

„Teckentrup“ or equivalent.

(Compile and tender according to requirements. Please refer to technical data below for respective details. Updated 1. April 2018)

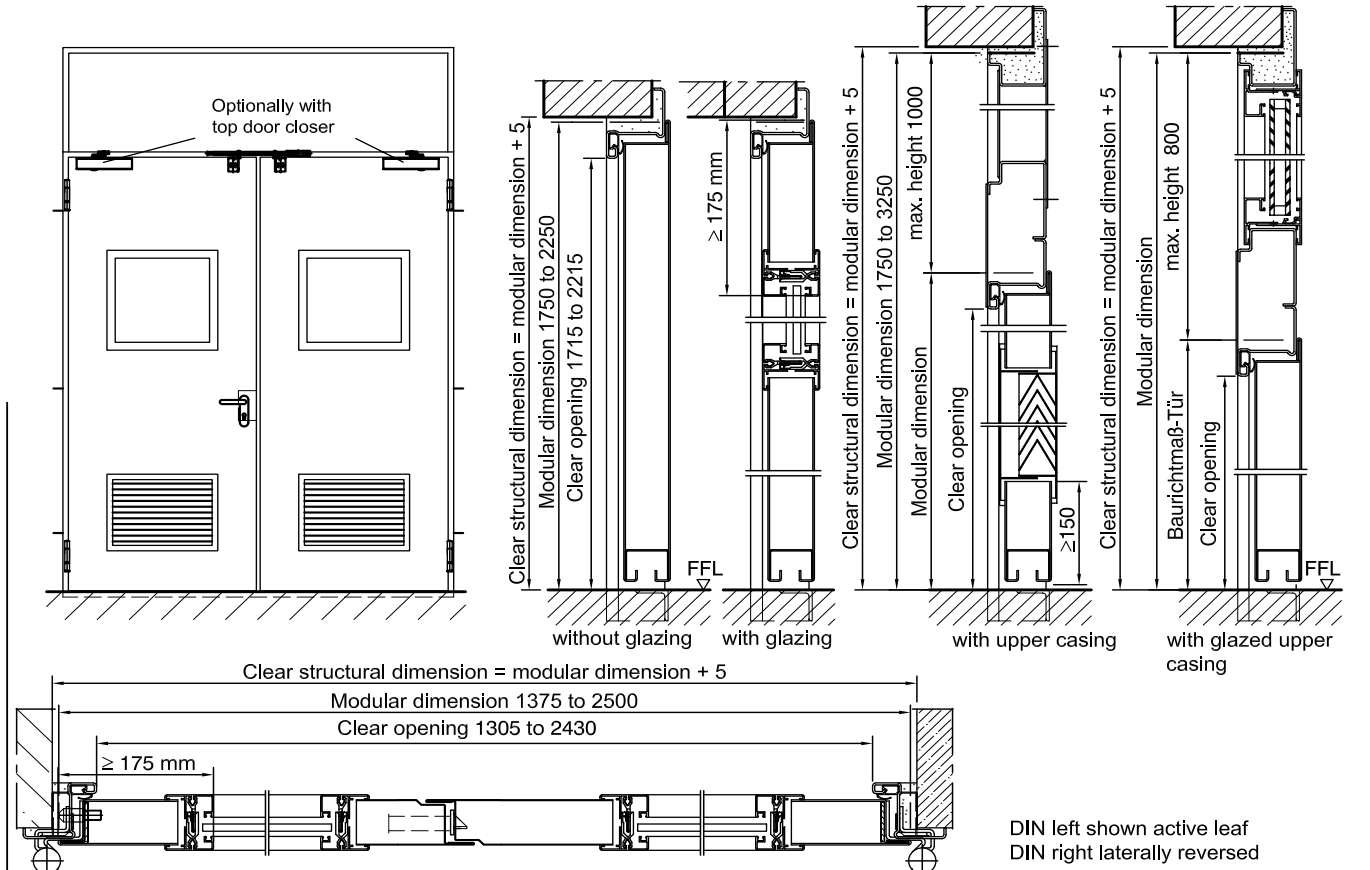
Technical data

Product	dw 42-2-Tür „Teckentrup“ Heat insulation as per EN ISO 12567-1 $U_D = 1.8 \text{ W/m}^2\text{K}$	Special equipment	<ul style="list-style-type: none"> ▪ Handle sets / Lever/Knob sets: <ul style="list-style-type: none"> - plastic - light metal - stainless steel - with short plate or rose escutcheon (various makes) with fixed outer knob ▪ Prepared for rose escutcheon ▪ Locks <ul style="list-style-type: none"> - profile cylinder 30.5 + 30.5 mm - panic locks ▪ Top door closer DIN EN 1154 ▪ Spring hinge ▪ Floor seal ▪ Rectangular glazing (special size) ▪ Round glazing max. Ø 600 mm with rubber clamping profile ▪ Aluminium ventilation grille ▪ Steel transformer grille ▪ Upper casing ▪ Upper casing with glazing or transformer grille ▪ Aluminium rain guard ▪ Floor seals are retrofittable 																						
Installation in	<ul style="list-style-type: none"> ▪ Masonry ▪ Concrete ▪ Autoclaved aerated concrete ▪ Lightweight construction wall 																								
Dimensions	Width: 1375 - 2500 mm Height: 1750 - 2250 mm																								
Type of handing	Active door leaf DIN right or DIN left																								
Door leaf	Double-skinned, thin rebated on 3 sides Door leaf thickness: 42 mm Sheet thickness: 1,0 or 1,5 mm Security bolts: 1 Insulation: mineral wool																								
Frame	corner frame 2 mm thick, with 3-sided seal and bottom sill. Frame fastening by exposed masonry mounting Special equipment: <ul style="list-style-type: none"> ▪ block frame, counter frame or closed frame ▪ counter frame or closed frame required for installation in lightweight construction stud walls/ autoclaved aerated concrete. ▪ with floor recess 																								
Surface	Galvanized and powder coated door leaf/frame similar to RAL 9002 (Grey white)																								
Hinges	<ul style="list-style-type: none"> ▪ 4 KO hinges with ball bearings 																								
Fittings	<ul style="list-style-type: none"> ▪ Active door leaf <ul style="list-style-type: none"> - Mortice lock with latch lever as per DIN 18250, prepared for profile cylinder - Black plastic handle set Handle pivoted on bearing, with tumble insert (Bb) and 1 Bb key ▪ Inactive door leaf <ul style="list-style-type: none"> - Concealed door edge bolt, locking at the top and bottom 																								
Glazing	<ul style="list-style-type: none"> ▪ Standard glazing wire reinforced glass with alu glazing strips-Special glazing <ul style="list-style-type: none"> - rhombus-shaped glazing, - round glazing (rubber clamp profile, steel/stainless steel ring) - cut-out of choice with light metal strips, max. glass pane size up to 1,5 m². ▪ Glazing <ul style="list-style-type: none"> - VSG laminated safety glass - acrylic glass - ISO glass VSG/VSG - ISO glass, wire reinforced/VSG 																								
		<table border="1"> <thead> <tr> <th></th> <th>Ordering size/ Modular dimensions width x height</th> <th>Clear openingsize (corner frame) width x height</th> </tr> </thead> <tbody> <tr> <td rowspan="10">Standard sizes</td> <td>1500 x 2000</td> <td>1430 x 1965</td> </tr> <tr> <td>2125</td> <td>2090</td> </tr> <tr> <td>1750 x 2000</td> <td>1680 x 1965</td> </tr> <tr> <td>2000 x 2000</td> <td>1930 x 1965</td> </tr> <tr> <td>2125</td> <td>2090</td> </tr> <tr> <td>2500</td> <td>2465</td> </tr> <tr> <td>2125 x 2125</td> <td>2055 x 2090</td> </tr> <tr> <td>2250 x 2250</td> <td>2180 x 2215</td> </tr> <tr> <td>2500 x 2250</td> <td>2430 x 2215</td> </tr> </tbody> </table>		Ordering size/ Modular dimensions width x height	Clear openingsize (corner frame) width x height	Standard sizes	1500 x 2000	1430 x 1965	2125	2090	1750 x 2000	1680 x 1965	2000 x 2000	1930 x 1965	2125	2090	2500	2465	2125 x 2125	2055 x 2090	2250 x 2250	2180 x 2215	2500 x 2250	2430 x 2215	
	Ordering size/ Modular dimensions width x height	Clear openingsize (corner frame) width x height																							
Standard sizes	1500 x 2000	1430 x 1965																							
	2125	2090																							
	1750 x 2000	1680 x 1965																							
	2000 x 2000	1930 x 1965																							
	2125	2090																							
	2500	2465																							
	2125 x 2125	2055 x 2090																							
	2250 x 2250	2180 x 2215																							
	2500 x 2250	2430 x 2215																							
	Further qualifications (special equipment)			Sound insulated as per DIN EN 20140/717-1 RW 40dB with bottom buffer RW 40dB with retractable bottom seal RW 40dB with sliding threshold seal																					



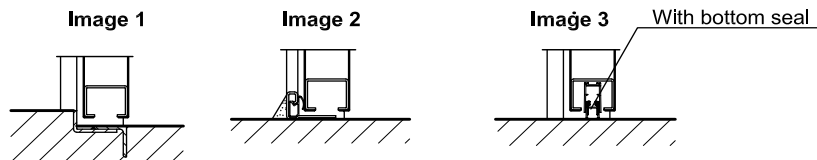
Steel door dw 42-2 „Teckentrup“

optionally with glazing, optionally with upper casing



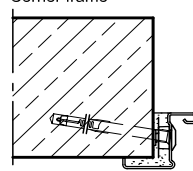
Floor connections:

- Image 1: With bottom buffer
- Image 2: With bottom buffer/seal
- Image 3: With bottom seal

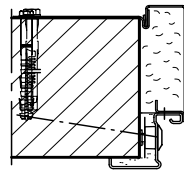


Installation in masonry/ concrete walls

Exposed masonry installation
Corner frame

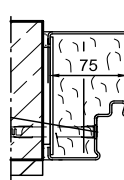


Corner frame with counter frame

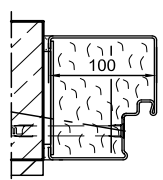


Block-Frame

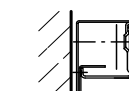
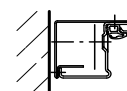
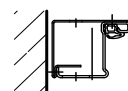
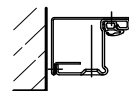
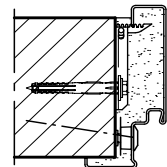
Type 4.1



Type 4.2



Closed frame



Type 5.1

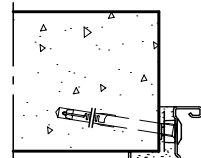
Type 5.2

Type 5.3

Type 5.3 L

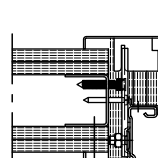
Installation in autoclaved aerated concrete walls

Wall plug assembly
Corner frame



Installation in lightweight construction stud walls

Corner frame with counter frame



Closed frame

