



Steel door dw 62-2 „Teckentrup“ Steel door dw 62-2 „Teckentrup XL“

optionally with glazing, optionally with upper casing

Text example:

Heat-insulated double-leaf steel door dw 62-2, double-skinned, filled with mineral wool. Active door leaf DIN right. Flush mounted door leaf with less protruding hinges. Door leaf/Frame galvanized and prime coated similar to RAL 9002 (Grey white). 62 mm thick, rebated on 3-sides. Corner frame 1.5 mm, with 3-sided seal. Active door leaf with mortice lock with latch lever in accordance with DIN 18250, prepared for profile cylinder. Black plastic handle set. Handle pivoted on bearing, with tumbler insert (Bb) and 1 Bb key. Inactive door leaf with concealed door edge bolt. 1/3 security bolts per leaf, 2 KO hinges per leaf. „Teckentrup“ or equivalent.

Compile and tender according to requirements. Please refer to technical data below for respective details. Updated 1. March 2018

Technical data

Also available in **STAINLESS**

Product	dw 62-2-door „Teckentrup“ Heat insulation in acc. with EN ISO 12567-1 (doors without glazing) $U_D = 1.4 \text{ W/m}^2\text{K}$ dw 62-2-door „Teckentrup XL“	Glazing	Standard glazing wire reinforced glass with LM glazing strips ▪ Special glazing - Round glazing (steel/stainless steel ring) - Cut-out of choice with LM glazing strips
Installation in	<ul style="list-style-type: none"> ▪ Masonry ▪ Concrete ▪ Autoclaved aerated concrete ▪ Lightweight construction wall 	Special equipment	<ul style="list-style-type: none"> ▪ Handle sets / Lever / Knob sets: <ul style="list-style-type: none"> - plastic - light metal - stainless steel - with short plate or rose escutcheon (various makes) with fixed outer knob ▪ Locks: <ul style="list-style-type: none"> - profile cylinder 40.5 + 40.5 mm - panic locks ▪ Top door closer DIN EN 1154 ▪ concealed slide rail-door closer ITS 96 ▪ Floor seals ▪ Rectangular glazing (special size) ▪ Aluminium ventilation grille ▪ Steel transformer grille ▪ Upper casing ▪ Upper casing with glazing or grille ▪ Aluminium rain guard
Dimensions	dw 62-2-door „Teckentrup“ Width: 1375 - 3000 mm Height: 1750 - 3000 mm dw 62-2-door „Teckentrup XL“ Width: 1375 - 3000 mm Height: 3001 - 4000 mm		
Type of handing	DIN right or DIN left		
Door leaf	Double-skinned, rebated on 3 sides Door leaf thickness: 62 mm Sheet thickness „Teckentrup“: 1.0/1.5 mm „Teckentrup XL“: 1.5 mm Security bolts per leaf „Teckentrup“: 1 Security bolts per leaf „Teckentrup XL“: 3		
Frame	dw 62-2-door „Teckentrup“ Corner frame, 1.5 mm thick, with 3-sided seal and bottom sill. Frame fastening by exposed masonry mounting. dw 62-2-door „Teckentrup XL“ Corner frame 2 mm thick with 3-sided seal and bottom sill. Frame fastening by exposed masonry mounting. Special equipment: block, counter or closed frame		
Floor seals	Retractable floor seal, sliding threshold seal, Buffer strip and seal. Floor seal retrofittable.		
Surface	Galvanized and prime coated door leaf/frame similar to RAL 9002 (Grey white) Special equipment: • Stainless steel		
Hinges	dw 62-2 „Teckentrup“ <ul style="list-style-type: none"> ▪ 4 KO hinges with ball bearings • Compensation rings for height adjustment dw 62-2 „Teckentrup XL“ <ul style="list-style-type: none"> ▪ 4 KO hinges (4 mm) with ball bearings 		
Fittings	<ul style="list-style-type: none"> ▪ Active door leaf <ul style="list-style-type: none"> - Mortice lock with latch lever, prepared for profile cylinder - Round handle set, black (plastic) Handle pivoted on bearing, with tumbler insert and 1 Bb key ▪ Inactive door leaf <ul style="list-style-type: none"> - Concealed door edge bolt - „Teckentrup“ - Overlying door edge bolt - „Teckentrup XL“ locking at the top and bottom 		
		Ordering size/ Modular dim. width x height	Clear opening size (corner frame) width x height
		Standard sizes	
		1500 x 2000	1416 x 1958
		2125	2083
		1750 x 2000	1666 x 1958
		2000 x 2000	1916 x 1958
		2125	2083
		2500	2458
		2125 x 2125	2041 x 2083
		2250 x 2250	2166 x 2208
		2500 x 2500	2416 x 2458

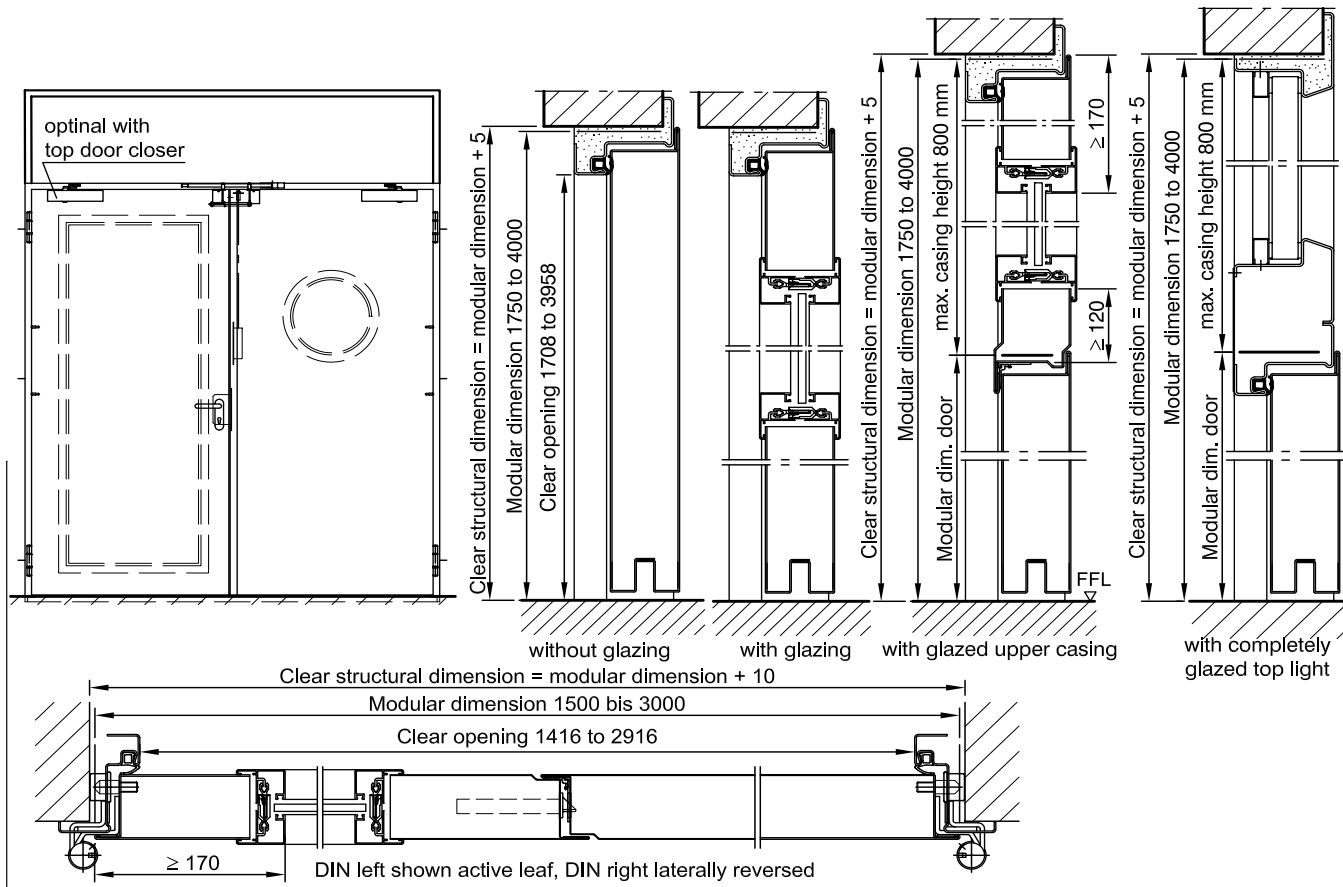
Further qualifications (special equipment)



Sound insulated as per DIN EN 20140/717-1
RW 38dB with retractable bottom seal
RW 37dB with sliding threshold seal
RW 38dB with bottom buffer and seal

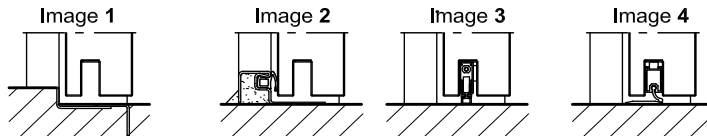
Steel door dw 62-2 „Teckentrup“
Steel door dw 62-2 „Teckentrup XL“

optionally with glazing, optionally with upper casing



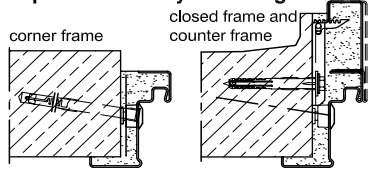
Floor connections:

- Image 1: With bottom buffer
- Image 2: With bottom buffer/seal
- Image 3: With bottom seal (smoke-proof door with top door closer)
- Image 4: sliding threshold seal

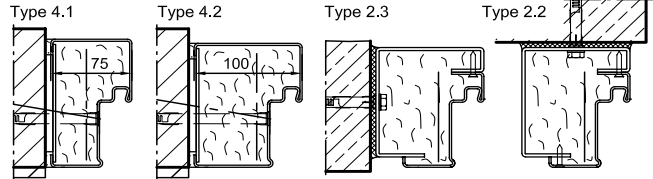


Installation in masonry/ concrete walls

exposed masonry mounting

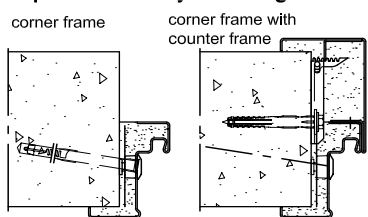


Flush installation

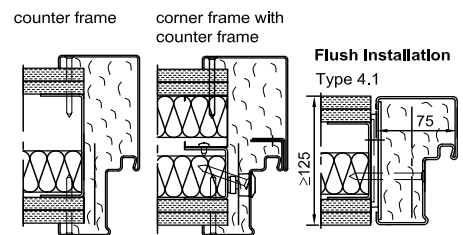


Installation in autoclaved aerated concrete walls

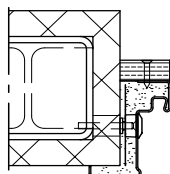
exposed masonry mounting



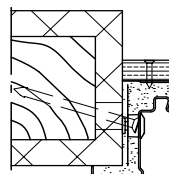
Installation in lightweight construction stud walls (doors with top door closer)



Installation on concealed steel supports



Installation on wooden supports



Please find a detailed installation overview in the planning-, installation- and maintenance manual for 1-leaf and 2-leaf doors.