



Steel door dw 62-2 „Teckentrup“ Steel door dw 62-2 „Teckentrup XL“

thick rebated, optionally with glazing, optionally with top light/upper casing

Text example:

Heat-insulated double-leaf steel door dw 62-2, double-skinned, filled with mineral wool. Active door leaf DIN right. Flush mounted door leaf with less protruding hinges. Door leaf/Frame galvanized and prime coated similar to RAL 9002 (Grey white). 62 mm thick, rebated on 3-sides. Corner frame 1.5 mm, with 3-sided seal. Active door leaf with mortice lock with latch lever in accordance with DIN 18250, prepared for profile cylinder. Black plastic handle set. Handle pivoted on bearing, with tumbler insert (Bb) and 1 Bb key. Inactive door leaf with concealed door edge bolt. 1/3 security bolts per leaf, 2 KO hinges per leaf. „Teckentrup“ or equivalent.

Compile and tender according to requirements. Please refer to technical data below for respective details. Updated 1. March 2018

Technical data

Also available in **STAINLESS**

Product	dw 62-2 door „Teckentrup“ Heat insulation as per EN ISO 12567-1 (doors without glazing) $U_D = 1.4 \text{ W/m}^2\text{K}$ dw 62-2 door „Teckentrup XL“
Installation in	<ul style="list-style-type: none"> ▪ Masonry ▪ Concrete ▪ Autoclaved aerated concrete ▪ Lightweight construction wall
Dimensions	dw 62-2-door „Teckentrup“ Modular dimension B 1375 - 3000 mm H 1750 - 3000 mm With top light/ top casing up to: H 4750 mm dw 62-2-door „Teckentrup XL“ Modular dimension B 1375 - 1500 mm H 3001 - 3500 mm With top light/ top casing up to: H 4750 mm
Type of handing	DIN right or DIN left
Door leaf	Double-skinned, rebated on 3 sides thick rebated Door leaf thickness: 62 mm Sheet thickness: 1.0/1.5 mm Security bolt: min. per leaf 1
Frame	dw 62-2-Tür „Teckentrup“ <ul style="list-style-type: none"> ▪ Corner frame, 1.5 mm thick, galvanized dw 62-2-Tür „Teckentrup XL“ <ul style="list-style-type: none"> ▪ Corner frame, 2.0 mm thick, galvanized Corner frame with 3-sided seal and bottom sill. Frame fastening by exposed masonry mounting. Special equipment: block, counter or closed frame.
Floor seals	<ul style="list-style-type: none"> ▪ Retractable floor seal ▪ sliding threshold seal ▪ Buffer strip and seal Floor seal retrofittable
Surface	Galvanized and prime coated door leaf/frame similar to RAL 9002 (Grey white) Special equipment: • Stainless steel
Hinges	dw 62-2 „Teckentrup“ <ul style="list-style-type: none"> ▪ 2 KO hinges with ball bearings Compensation rings for height adjustment dw 62-2 „Teckentrup XL“ <ul style="list-style-type: none"> ▪ 3 KO hinges (4 mm) with ball bearings

Fittings	<ul style="list-style-type: none"> ▪ Active door leaf <ul style="list-style-type: none"> - Mortice lock with latch lever, prepared for profile cylinder - Round handle set, black (plastic) Handle pivoted on bearing, with tumbler insert and 1 Bb key ▪ Inactive door leaf <ul style="list-style-type: none"> - Concealed door edge bolt - „Teckentrup“ - Overlying door edge bolt - „Teckentrup XL“ locking at the top and bottom
Glazing	Standard glazing wire reinforced glass with LM glazing strips <ul style="list-style-type: none"> ▪ Special glazing <ul style="list-style-type: none"> - Round glazing (steel/stainless steel ring) - Cut-out of choice with LM glazing strips
Special equipment	<ul style="list-style-type: none"> ▪ Handle sets / Lever / Knob sets: <ul style="list-style-type: none"> - plastic - light metal - stainless steel - with short plate or rose escutcheon (various makes) with fixed outer knob ▪ Locks: <ul style="list-style-type: none"> - profile cylinder 40.5 + 40.5 mm - panic locks ▪ Top door closer DIN EN 1154 ▪ concealed slide rail-door closer ITS 96 ▪ Floor seals ▪ Rectangular glazing (special size) ▪ Aluminium ventilation grille ▪ Steel transformer grille ▪ Upper casing ▪ Upper casing with glazing or grille ▪ Aluminium rain guard ▪ 3D Hinges

	Ordering size/ Modular dim. width x height	Clear opening size (corner frame) width x height
Standard sizes	1500 x 2000	1416 x 1961
dw 62-1 „Teckentrup“	2125	2086
	1750 x 2000	1666 x 1961
dw 62-2 „Teckentrup“	2125	2086
	2000 x 2000	1916 x 1961
dw 62-2 „Teckentrup XL“	2125	2086
	2500	2461
dw 62-2 „Teckentrup“	2125 x 2125	2041 x 2086
	2250 x 2250	2166 x 2211
	2500 x 2500	2416 x 2461
	2500 x 2500	2416 x 2461

(Special sizes: from 1375 x 1750 to 3000 x 3500 mm)

Further qualifications (special equipment):

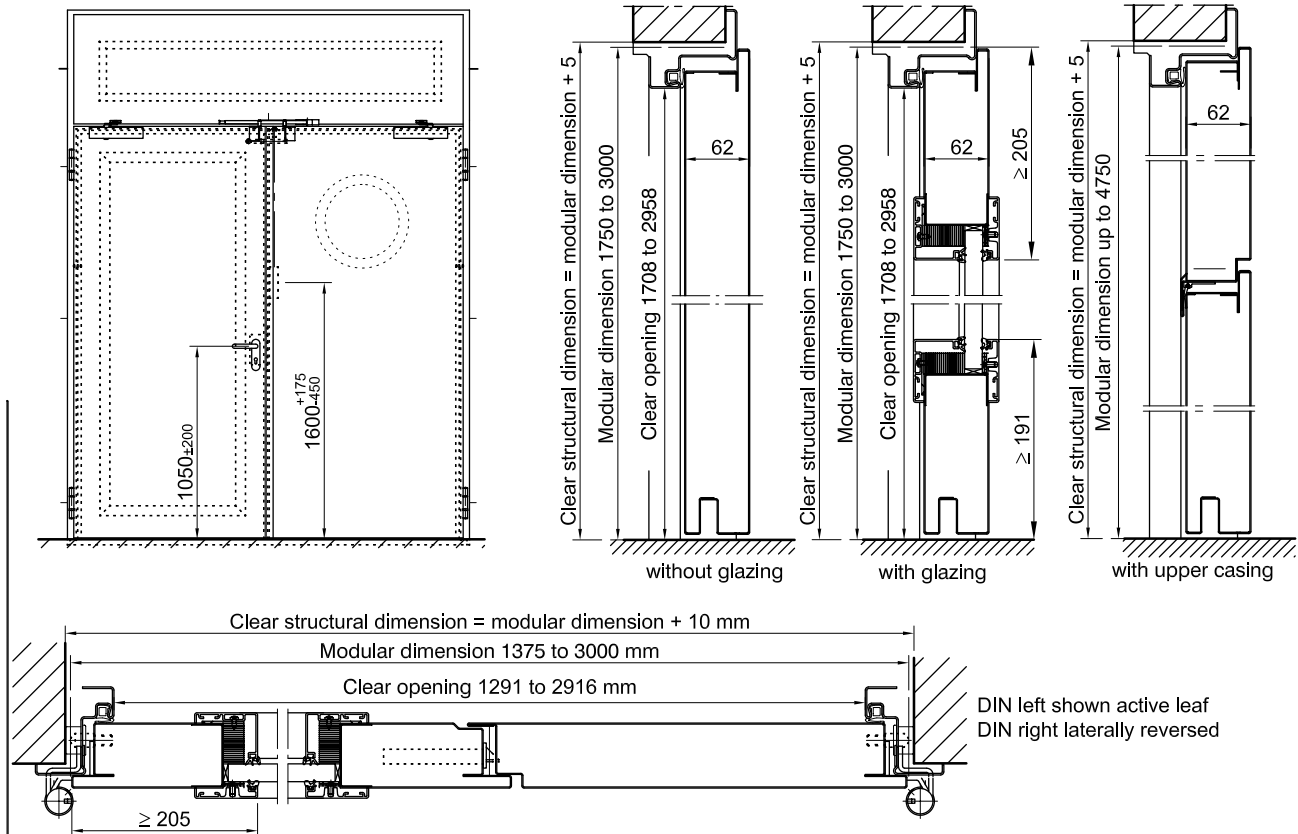


Sound insulated as per DIN EN 20140/717-1
 RW 38dB with retractable bottom seal
 RW 38dB mit with sliding threshold seal



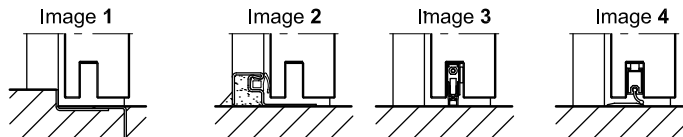
Steel door dw 62-2 „Teckentrup“ Steel door dw 62-2 „Teckentrup XL“

thick rebated, optionally with glazing, optionally with top light/upper casing



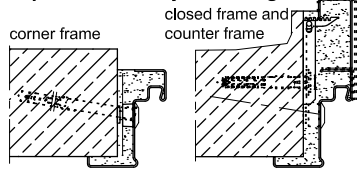
Floor connections:

- Image 1: With bottom buffer
- Image 2: With bottom buffer/seal
- Image 3: With bottom seal (smoke-proof door with top door closer)
- Image 4: sliding threshold seal

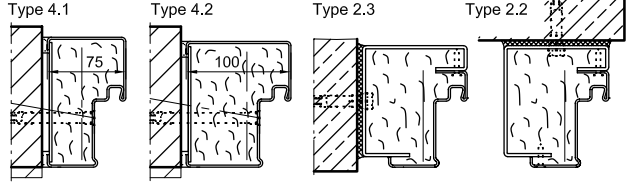


Installation in masonry/ concrete walls

exposed masonry mounting

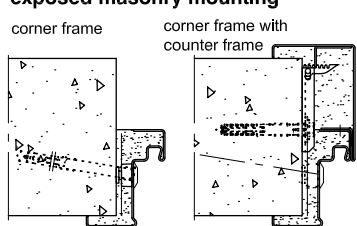


Flush installation

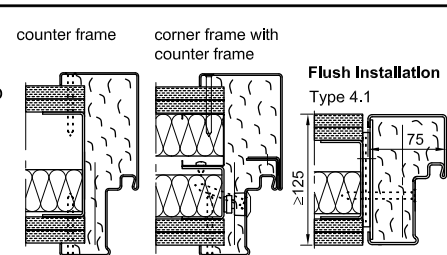


Installation in autoclaved aerated concrete walls

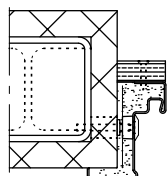
exposed masonry mounting



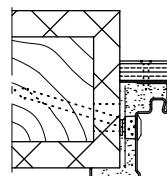
Installation in lightweight construction stud walls (doors with top door closer)



Installation on concealed steel supports



Installation on wooden supports



Please find a detailed installation overview in the planning-, installation- and maintenance manual for 1-leaf and 2-leaf doors.