



Stainless steel door „Teckentrup Water-1“

optionally with glazing

Text example:

Water-1 stainless steel door, double-skinned, filled with water-repellent insulating material. Single-leaf door element. Type of handing DIN right. Door leaf V2A 1.4301 canvas structure, 52 mm thick, rebated on 3 sides with thick rebate. Corner frame V2A 1.4301, 2 mm thick, with 3-sided seal. Mortice lock with latch lever in accordance with DIN 18250, prepared for profile cylinder with V2A lock plate. FS round handle set V2A. 1 security bolt V2A. 2 KO hinges in V2A with ball bearings „Teckentrup“ or equivalent.

(Compile and tender according to requirements. Please refer to technical data below for respective details. Updated 1. April 2018)

Technical data

Product:	„Teckentrup Water-1“		
Installation in:	<ul style="list-style-type: none"> ▪ Masonry ▪ Concrete 		
Dimensions	Width:	750 - 1250 mm	
	Height:	1750 - 2500 mm	
Type of handing	DIN right or DIN left		
Door leaf	Double-skinned, rebated on 3 sides, thick rebate Insulation: Water-repellent insulating material Sheet thickness: 0.8 mm Door leaf thickness: 52 mm Security bolt V2A per leaf: 1		
Frame	Stainless steel corner frame, 2 mm thick with 3-sided seal and bottom sill, 3 welded-on stainless steel wall anchor plugs on each side. Special equipment: Block frame and counter or closed frame, stainless steel		
Surface	Door leaf: V2A 1.4301, 240 grain size Frame: V2A 1.4301, 240 grain size		
Fittings	<ul style="list-style-type: none"> ▪ 2 (4) KO hinges in V2A with ball bearings ▪ Mortice lock with latch lever in acc. with ▪ DIN 18250, prepared for profile cylinder with V2A lock plate ▪ FS round handle set, V2A 		
Glazing:	Wire or ISO glass with V2A glazing frame or rubber clamping profile Max. size 1000 x 1500 mm (window size)		

Special equipment

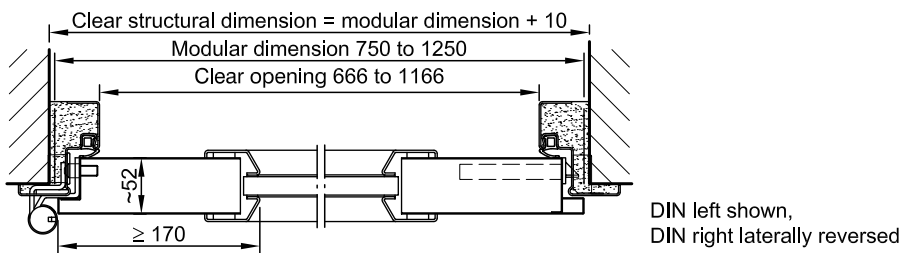
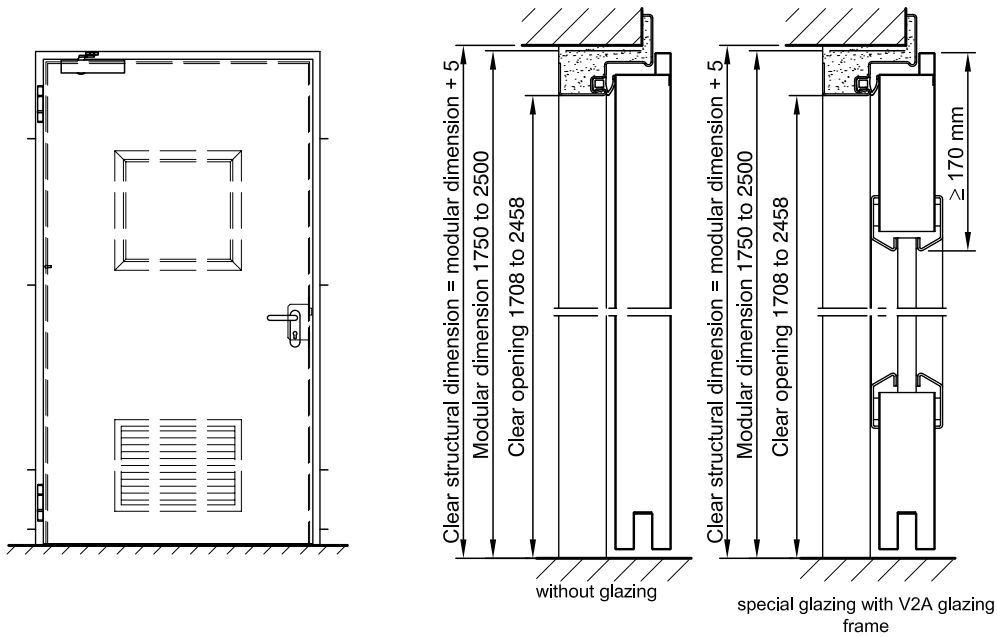
- Handle sets / Lever/Knob sets
- Plastic
- Light metal
- Stainless steel
- With short plate or rose escutcheon (various makes)
- With fixed outer knob
- Locks
 - Profile cylinder 35.5 + 40.5 mm
 - Panic locks
- Top door closer DIN EN 1154
- Spring hinge
- Floor seals
- Rectangular glazing (special size)
- Round glazing max. Ø 600 mm with rubber clamping profile
- Aluminium ventilation grille
- Steel transformer grille
- Aluminium rain guard

	Ordering dimensions/ Modular dimensions width x height	Clear opening dimensions width x height
Standard sizes	750 x 2000	666 x 1961
	2125	2086
	875 x 1875	791 x 1836
	2000	1961
	2125	2086
	1000 x 2000	916 x 1961
	2125	2086
	1125 x 2000	1041 x 1961
	2125	2086
	1250 x 2000	1166 x 1961
	2125	2086

(Special sizes: from 750 x 1750 up to 1250 x 2500)

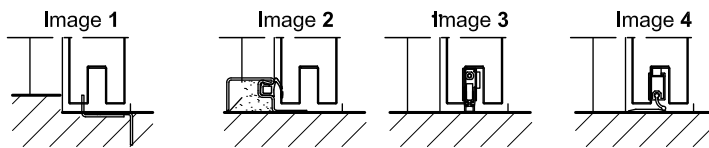
Stainless steel door
„Teckentrup Water-1“

optionally with glazing



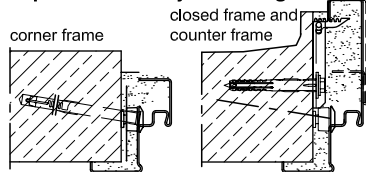
Floor connections:

- Image 1: With bottom buffer
- Image 2: With bottom buffer/seal
- Image 3: With bottom seal (smoke-proof door with top door closer)
- Image 4: sliding threshold seal

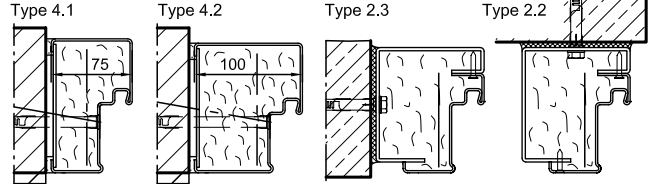


Installation in masonry/ concrete walls

exposed masonry mounting



Flush installation



Please find a detailed installation overview in the planning- and maintenance manual for 1-leaf and 2-leaf doors.