



SOUND-INSULATED STEEL DOOR

dw 67-1/S „Teckentrup“ up to $R_w = 53$ dB

dw 67-1/HS „Teckentrup“ up to $R_w = 57$ dB

Text example:

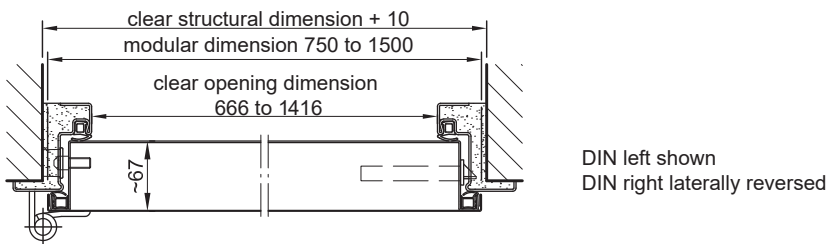
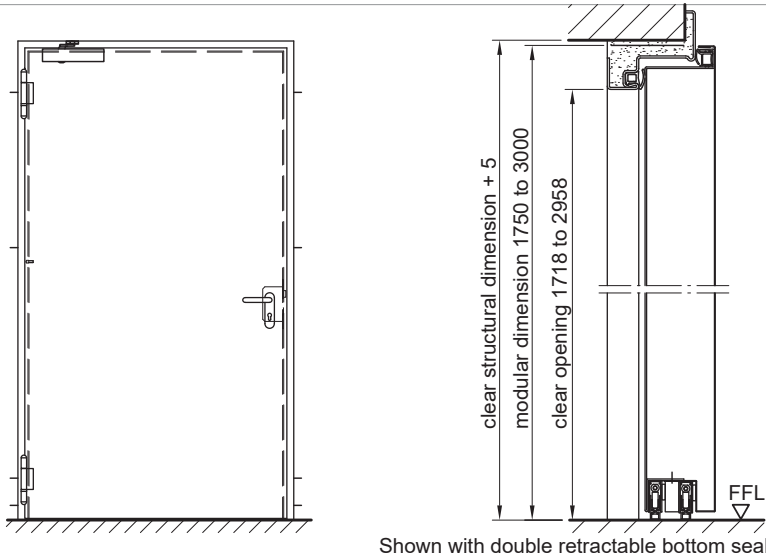
dw 67-1/S sound-insulated door tested in accordance with DIN EN 20140/717 part 1. Single-leaf door element. Type of handing DIN right. Door leaf 67 mm thick, rebated on 3-sides, thick rebate with rebate seal. Corner frame 2.0 mm thick with 3-sided seal, with floor recess. Door leaf with double sanding seal and floor profile (53 dB). Door leaf and frame galvanised and primed, grey-white similar to RAL 9002. Mortise lock with change pz-perforated. Round handle set black (plastic). Lever handle with fixed bearing, bunt-bit insert and 1 Bb-key. 2 construction hinges with ball bearing. Make "Teckentrup" or comparable
 (Compile and tender according to requirements. Please refer to the technical data below for the relevant information.
 below. Status 01.06.2023)

Technical data

Building inspection Approval	<p>tested in accordance with DIN EN 20140 Evaluation according to DIN EN ISO 717 Part 1</p> <p>The specified sound insulation values are laboratory values. The following applies to the sound reduction index achievable in the building: Laboratory value -5 dB.</p> <p>The specified values relate to a maximum MD-height of 2500 mm.</p>	Fittings	<p>Mortise lock with change, PZ-perforated, MD > 1350 x 2500 mm with additional Locking to the top</p> <ul style="list-style-type: none"> ▪ FS round lever handle set, black (plastic). Handle with fixed bearing with Buntbart insert and 1 Bb key. ▪ Profile cylinder required
Installation in	<ul style="list-style-type: none"> ▪ Masonry ▪ Cooncrete ▪ Autoclaved aerated concrete ▪ Lightweight stud wall <p>Sound insulation of the wall = Sound insulation of the door + ≥ 10 dB</p>	Special equipment	<p>Handle sets / Lever/Knob sets:</p> <ul style="list-style-type: none"> - plastic - light metal - stainless steel - with short plate or rose escutcheon (various makes) ▪ prepared for rosette fitting ▪ Panic bar handle <ul style="list-style-type: none"> ▪ Locks: <ul style="list-style-type: none"> - Panic locks ▪ Profile cylinder 50,5 x 35,5 mm ▪ Overhead door closer DIN EN 1154 <ul style="list-style-type: none"> - Hinge/hinged side
Dimensions	<p>Standard building dimension B 750 - 1500 mm H 1750 - 3000 mm</p>		
Type of handing	DIN right or DIN left		
Door leaf double-skinned	<p>Rebate type: thick rebated</p> <p>3-sided rebated with 3-sided rebate seal</p> <p>door leaf thick: 67 mm</p> <p>Door leaf thickness: 1,5 mm</p> <p>Security bolt: min. 1</p>		
Frame	<p>Corner frame 2.0 mm thick with 3-sided seal, with floor recess.</p> <p>Fixing of the frame by exposed masonry installation. Mortaring required on site.</p> <p>Special equipment:</p> <ul style="list-style-type: none"> ▪ Counter-, closed frame 		
Floor finishes	<p>dw 67-1/S:</p> <ul style="list-style-type: none"> ▪ with double retractable bottom seal 50 dB (Standard) ▪ with double sliding threshold seal and base profile 53 dB <p>dw 67-1/HS:</p> <ul style="list-style-type: none"> ▪ with double retractable bottom seal 55 dB (Standard) ▪ with double sliding threshold seal and base profile 57 dB <p>Approved for escape routes and emergency exits.</p>		
Surface	<p>Door leaf/Frame galvanized and prime coated, similar to RAL 9002 (Grey white).</p> <p>Special equipment:</p> <ul style="list-style-type: none"> ▪ RAL at choice 		
Hinges and closing devices	<ul style="list-style-type: none"> ▪ 2 construction hinges with ball bearing 		



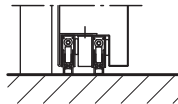
SOUND-INSULATED STEEL DOOR
dw 67-1/S „Teckentrup“ up to $R_w = 53$ dB
dw 67-1/HS „Teckentrup“ up to $R_w = 57$ dB



Floor finishes

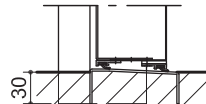
View 1:
with double retractable bottom seal
View 2:
with double sliding threshold seal
and base profile

View 1



dw 67-1/S = 50 dB
dw 67-1/HS = 55 dB

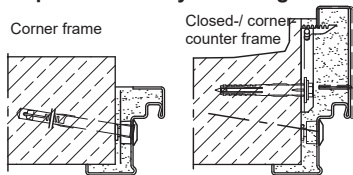
View 2



dw 67-1/S = 53 dB
dw 67-1/HS = 57 dB

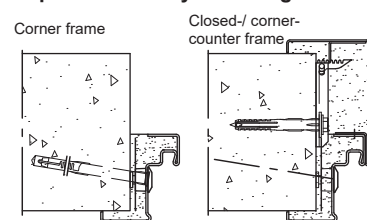
**Installation in masonry-
concrete walls**

Exposed masonry mounting

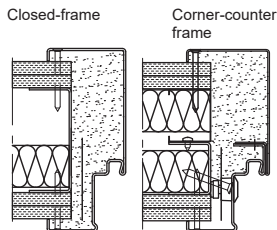


**Installation in autoclaved
aerated concrete
walls**

Exposed masonry mounting



**Fitting in assembly walls
(as quick fit frame)**



Please find a detailed installation overview in the planning-, installation- and maintenance manual for 1-leaf and 2-leaf doors.