



## Cellar security door HT 8 „Teckentrup“ WK 2

suitable for left/right usage, with Fire-resistant class T30

### Text example:

Cellar security door HT 8 „Teckentrup“, tested in accordance with DIN ENV 1627-WK 2. Single-leaf, suitable for left/right usage door element. Door-leaf 42 mm thick, rebated on 4-sides with and bottom sill. Corner frame 2.0 mm thick, with 4-sided seal. Door-leaf and frame galvanized and powder-coated (primed) in Grey white, similar to RAL 9002. Triple locking system. FS-Alu safety-handle set, class ES 1 DIN 18257. Safety profile cylinder with anti-drilling and extraction protection BZ, DIN 18252. 3 keys and security certificate. 1 KO hinge with ball bearings. 1 spring hinge secured hinge bolt, 1 security bolt.

Cellar security door „Teckentrup“ or equivalent.

(Compile and tender according to requirements. Please refer to technical data below for respective details. Updated 1. July 2017.)

### Technical data

<b>Product</b>	<b>Cellar security door HT 8 „Teckentrup“</b> accordance with DIN ENV 1627-WK 2 with Fire-resistant class T30 Heat insulation $U_D = 1.9 \text{ W}/(\text{m}^2\cdot\text{K})$ Sound insulated 39 dB		<b>Additional equipment</b>	<ul style="list-style-type: none"> <li>▪ Handle sets / Lever/Knob sets double-sided pusher for passdoor</li> <li>▪ Locks profile cylinder 35,5 + 30,5</li> <li>▪ Top door closer DIN EN 1154</li> <li>▪ Wide angle spyhole</li> <li>▪ Security chain (also lockable)</li> <li>▪ Rain guard</li> </ul>
<b>Installation in</b>	<ul style="list-style-type: none"> <li>▪ Masonry min. 115 mm</li> <li>▪ Concrete min. 100 mm</li> <li>▪ Autoclaved aerated concrete min. 150 mm</li> </ul>			
<b>Dimensions</b>	width: 750 - 1125 mm height: 1875 - 2125 mm			
<b>Type of handing</b>	Suitable for left/right usage			
<b>Door leaf</b>	Double-skinned, thin rebated on 4 sides, with bottom buffer seal (special size thin rebated on 3 sides, without bottom buffer seal) Door leaf thickness: 42 mm Sheet thickness: 0,9 mm Security bolt: min. 1 Reinforcement: flat steel Insulation: mineral fibre board			
<b>Frame</b>	Corner frame 2 mm thick, with 4-sided seal, Threshold - attached Installation of frame: screw-mounting Special equipment: counter frame 1,5 mm thick			
<b>Surface</b>	Door leaf/Frame galvanized and powder coated (primed) similar to RAL 9002 (Grey white). Additional equipment: RAL of choice			
<b>Hinges, closing devices</b>	<ul style="list-style-type: none"> <li>▪ 1 KO hinge with ball bearings</li> <li>▪ 1 spring hinge (secured hinge bolt)</li> </ul>			
<b>Fittings</b>	<ul style="list-style-type: none"> <li>▪ Triple locking system, prepared for profile cylinder</li> <li>▪ FS-Alu safety-handle set, class ES 1 DIN 18257</li> <li>▪ Safety profile cylinder with anti-drilling and extraction protection BZ, DIN 18252</li> <li>▪ 3 keys and security certificate</li> </ul>			
			<b>Ordering size/ modular dim. width x height</b>	<b>Clear passage size (corner frame) width x height</b>
			<b>Standard sizes</b>	
			750 x 2000 2125	680 x 1934 2059
			875 x 1875 2000 2125	805 x 1809 1934 2059
			1000 x 1875 2000 2125	930 x 1809 1934 2059
			1125 x 2125	1055 x 2059

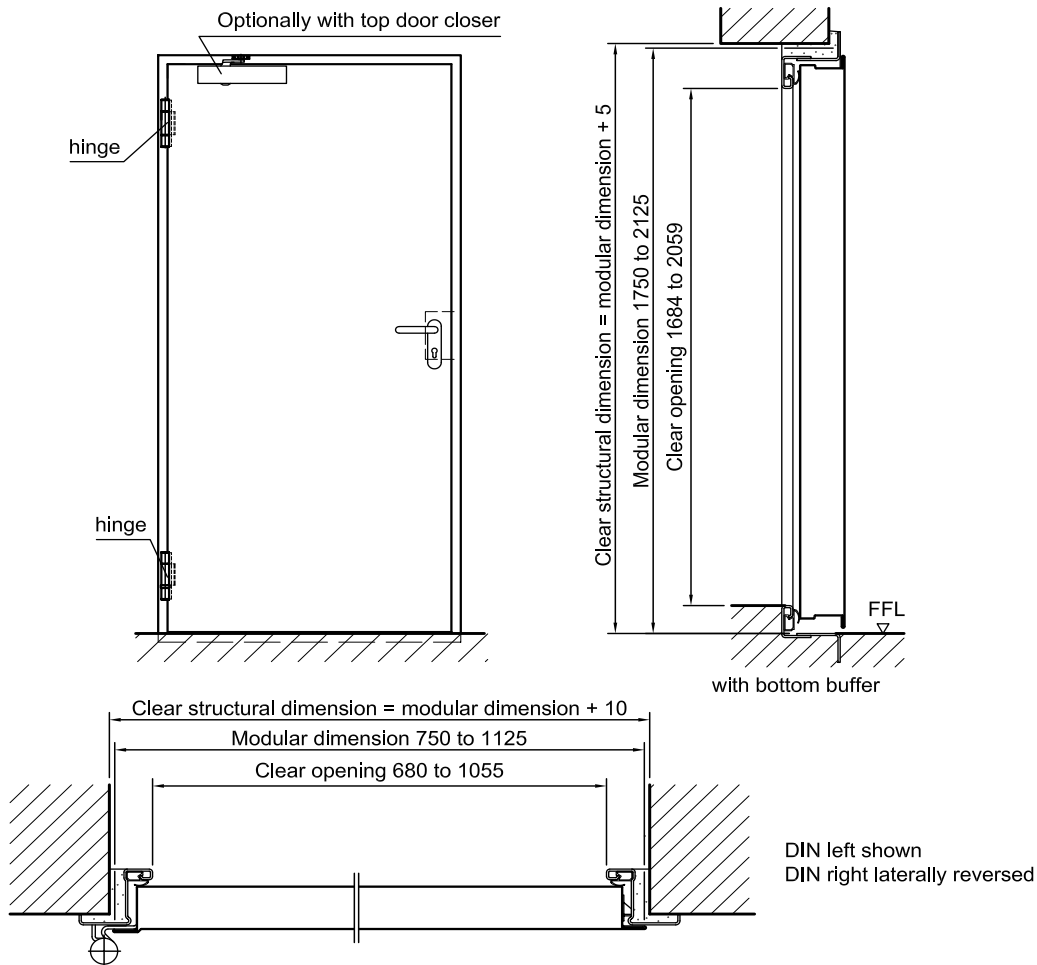
Further Qualifications  
(Special equipment)



Sound insulated in acc. with DIN EN 20140/717 Part 1  
 RW 39dB with bottom buffer and seal  
 RW 37dB with double sliding threshold seal

**Cellar security door HT 8**  
**„Teckentrup“ WK 2**

suitable for left/right usage, with Fire-resistant class T30



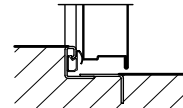
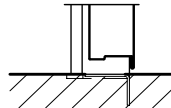
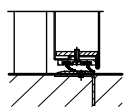
**Floor connections**

Image 1: double sliding threshold seal  
Image 2: without bottom buffer  
Image 3: with bottom buffer/seal

Image 1

Image 2

Image 3



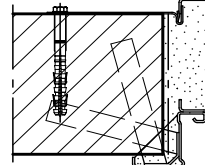
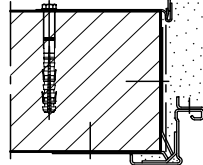
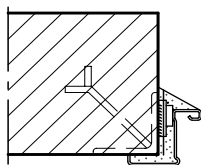
**Installation in masonry/  
concrete walls**

concrete walls  $\geq 100$  mm  
masonry walls  $\geq 115$  mm

**Weld-on assembly**

**Wall plug assembly**

**Wall anchor assembly**



(Corner Frame)

(Corner Frame with counter frame)

**Installation in autoclaved aerated  
concrete walls**

Made of autoclaved aerated  
concrete blocks or high precision  
units in acc. with DIN 4165 strength  
class 4 min. 150 mm or made of  
reinforced autoclaved aerated  
concrete slabs strength class 4.  
Wall thickness  $\geq 150$  mm

**Wall anchor assembly**

**Wall plug assembly**

**Wall plug assembly**

